

SFW08

Upholstery Stapler



Parts Reference Guide

Repair Kit

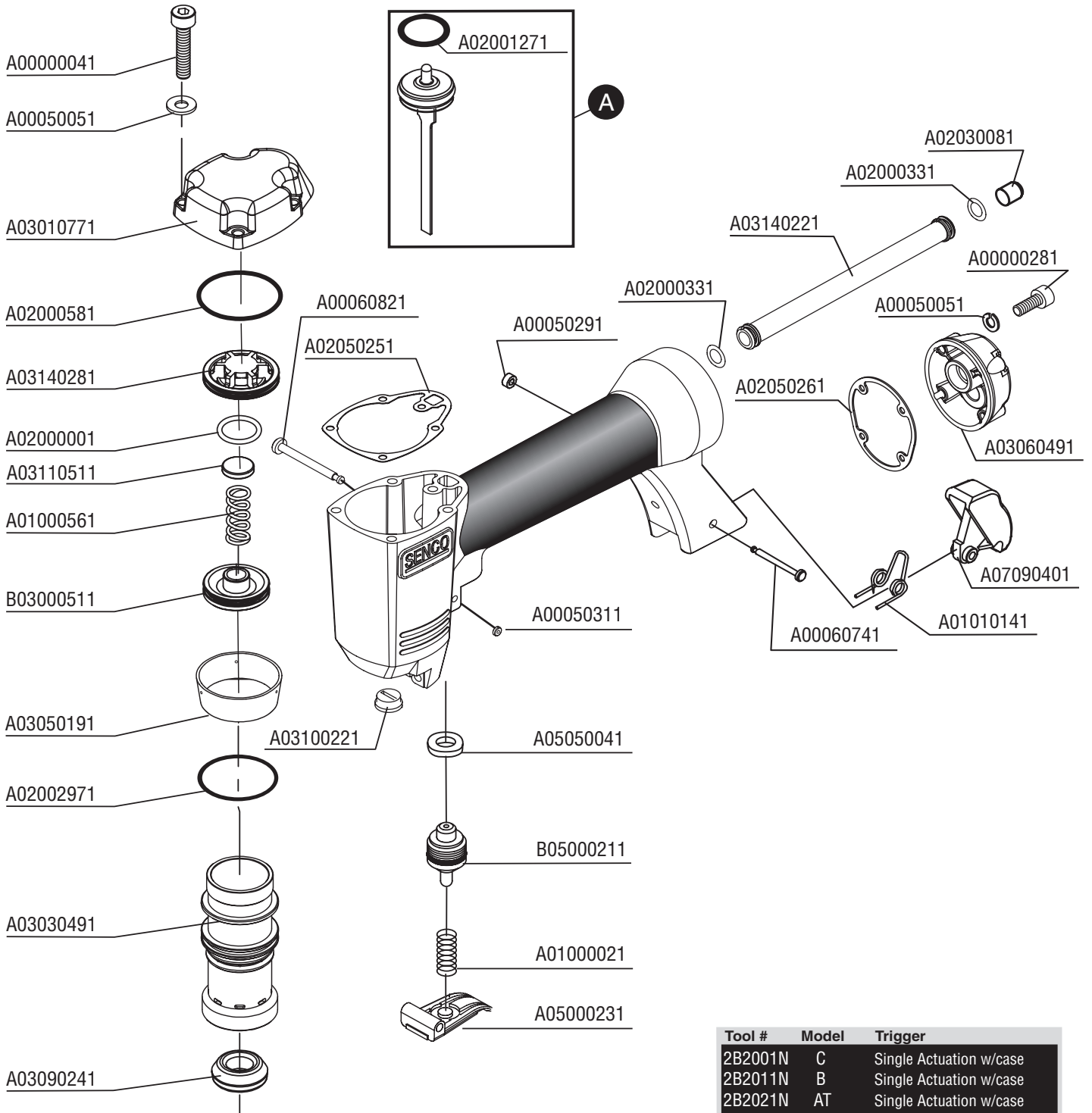
YK0397



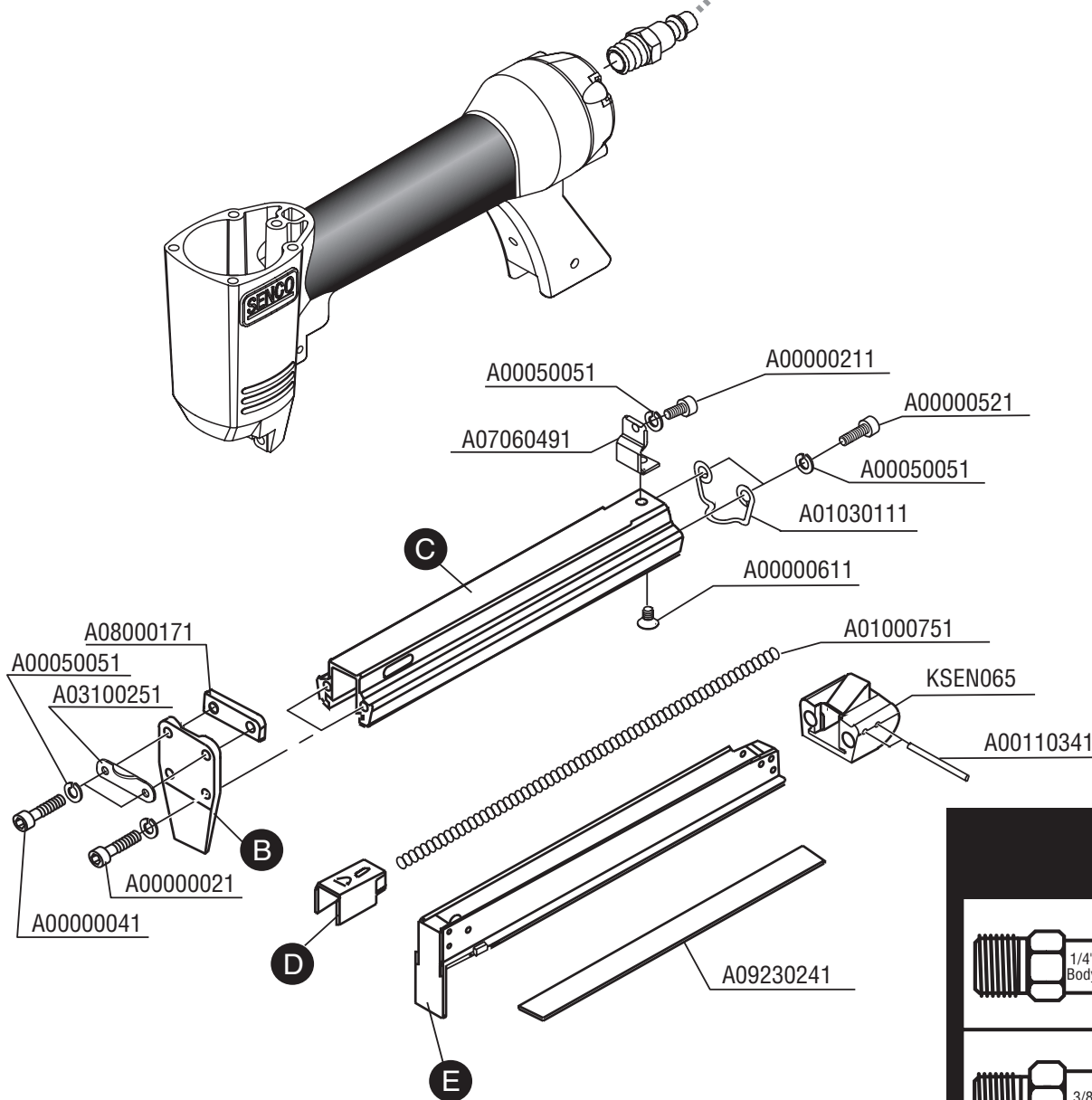
*** Schematic drawings inside**

Senco Products, Inc.
8485 Broadwell Road
Cincinnati, Ohio 45244
Visit our Website www.senco.com

Questions? Comments? call SENCO's toll-free Action-line:
1-800-543-4596 (North & South America only)
or e-mail: toolprof@senco.com



Tool #	Model	Trigger
2B2001N	C	Single Actuation w/case
2B2011N	B	Single Actuation w/case
2B2021N	AT	Single Actuation w/case

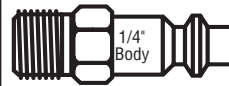


Tool #	A	B	C	D	E
2B2001N C- Wire	B06001301	A08010671	A07000671	A07070781	KSEN031
2B2011N B- Wire	B06001311	A08010681	A07000681	A07070791	KSEN033
2B2021N AT-wire	B06001321	A08010691	A07000681	A07070801	KSEN034

Available Plugs


(Not Included with Tool)

PC0479 ✓




1/4" Body
Ind. Interchange 1/4" NPT

PC0486




3/8" Body
Ind. Interchange 1/4" NPT

PC0468 ✓



1/4" Body
Tru-Flate 1/4" NPT

PC0474



3/8" Body
Tru-Flate 1/4" NPT

✓ **Recommended Plugs**
Plugs shown smaller than actual size

SFW08 Upholstery Stapler

REPLACEMENT PARTS LIST • LISTA DE PARTES DE REPUESTO • ERSATSTEILE-LISTE • LISTE DE PIÈCES DE RECHANGE

PART NO.	DESCRIPTION	DESCRIPCIÓN	BESCHREIBUNG	DÉSIGNATION
A0000021	SCREW	TORNILLO	SCHRAUBE	VIS
A0000041	SCREW	TORNILLO	SCHRAUBE	VIS
A0000211	SCREW	TORNILLO	SCHRAUBE	VIS
A0000281	SCREW	TORNILLO	SCHRAUBE	VIS
A0000521	SCREW	TORNILLO	SCHRAUBE	VIS
A0000611	SCREW	TORNILLO	SCHRAUBE	VIS
A00050051	WASHER	ARANDELA	SCHEIBE	RONDELLE
A00050291	RETAINER	JUNTA TÓRICA	SICHERUNGSRING	RETENUE
A00050311	RETAINER	JUNTA TÓRICA	SICHERUNGSRING	RETENUE
A00060741	PIN	PASADOR	STIFT	GOUPILLE
A00060821	PIN	PASADOR	STIFT	GOUPILLE
A00110341	PIN	PASADOR	STIFT	GOUPILLE
A01000021	SPRING	RESORTE	FEDER	RESSORT
A01000561	SPRING	RESORTE	FEDER	RESSORT
A01000751	SPRING	RESORTE	FEDER	RESSORT
A01010141	SPRING	RESORTE	FEDER	RESSORT
A01030111	SPRING	RESORTE	FEDER	RESSORT
A02000001	SEAL	SELLO	DICHTUNG	JOINT
A02000331	SEAL	SELLO	DICHTUNG	JOINT
A02000581	SEAL	SELLO	DICHTUNG	JOINT
A02001271	SEAL	SELLO	DICHTUNG	JOINT
A02002971	SEAL	SELLO	DICHTUNG	JOINT
A02030081	MUFFLER	SILENCIADOR	DÄMPFER	SILENCIEUX
A02050251	SEAL	SELLO	DICHTUNG	JOINT
A02050261	SEAL	SELLO	DICHTUNG	JOINT
A03030491	CYLINDER	CILINDRO	ZYLINDER	CYLINDRE
A03050191	RETAINER	JUNTA TÓRICA	SICHERUNGSRING	RETENUE
A03060491	COVER	CUBIERTA	ABDECKUNG	COUVERCLE
A03090241	STOP	TOPE	PUFFER	ARRÊT
A03010771	CAP	TAPA	KAPPE	BOUCHON
A03100221	BUSHING	CASQUILLO	HÜLSE	DOUILLE
A03100251	PLATE	PLACA	PLATTE	PLAQUE
A03110511	SEAL	SELLO	DICHTUNG	JOINT
A03140221	TUBE	TUBO	RÖHRE	TUBE
A03140281	VALVE	VÁLVULA	VENTIL	VALVE
A05000231	TRIGGER	GATILLO	AUSLÖSER	GÂCHETTE
A05050041	SEAL	SELLO	DICHTUNG	JOINT
A07000671	MAGAZINE (C)	CARGADOR	MAGAZIN	MAGASIN
A07000681	MAGAZINE (B&AT)	CARGADOR	MAGAZIN	MAGASIN
A07060491	BRACKET	SOPORTE	HALTERUNG	CAVALIER
A07070781	FEEDER SHOE (C)	ALIMENTADOR	KLAMMERSCHIEBER	POUSSOIR
A07070791	FEEDER SHOE (B)	ALIMENTADOR	KLAMMERSCHIEBER	POUSSOIR
A07070801	FEEDER SHOE (AT)	ALIMENTADOR	KLAMMERSCHIEBER	POUSSOIR
A07090401	LATCH	UNETA	VERSCHLUSS	DOIGT DE RETENUE
A08000171	PLATE	PLACA	PLATTE	PLAQUE
A08010671	PLATE (C)	PLACA	PLATTE	PLAQUE
A08010681	PLATE (B)	PLACA	PLATTE	PLAQUE
A08010691	PLATE (AT)	PLACA	PLATTE	PLAQUE
A09230241	LABEL(EURO)	ETIQUETA	AUFKLEBER	ÉTIQUETTE
B03000511	VALVE	VÁLVULA	VENTIL	VALVE
B03140281	VALVE	VÁLVULA	VENTIL	VALVE
B05000211	VALVE	VÁLVULA	VENTIL	VALVE
B06001301	PISTON ASSEMBLY (C)	ASAMBLE DE PISTON	KOLBEN-ZUSAMMENBAU	ENSEMBLE PISTON -COUTEAU
B06001311	PISTON ASSEMBLY (B)	ASAMBLE DE PISTON	KOLBEN-ZUSAMMENBAU	ENSEMBLE PISTON -COUTEAU
B06001321	PISTON ASSEMBLY (AT)	ASAMBLE DE PISTON	KOLBEN-ZUSAMMENBAU	ENSEMBLE PISTON -COUTEAU
KSEN031	MAGAZINE (C)(EURO)	CARGADOR	MAGAZIN	MAGASIN
KSEN033	MAGAZINE (B)(EURO)	CARGADOR	MAGAZIN	MAGASIN
KSEN034	MAGAZINE (AT)(EURO)	CARGADOR	MAGAZIN	MAGASIN
KSEN065	PLATE	PLACA	PLATTE	PLAQUE