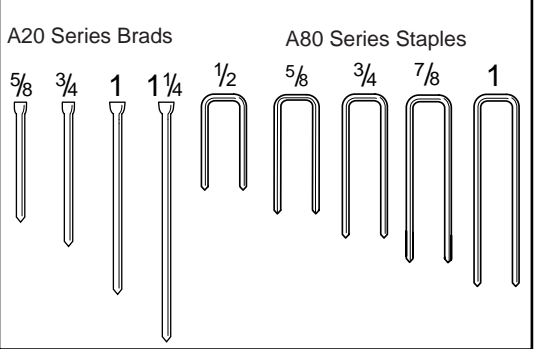
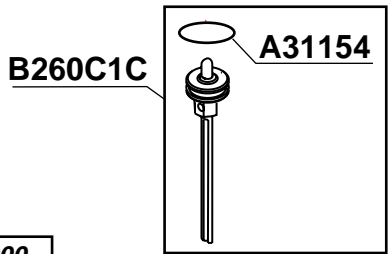
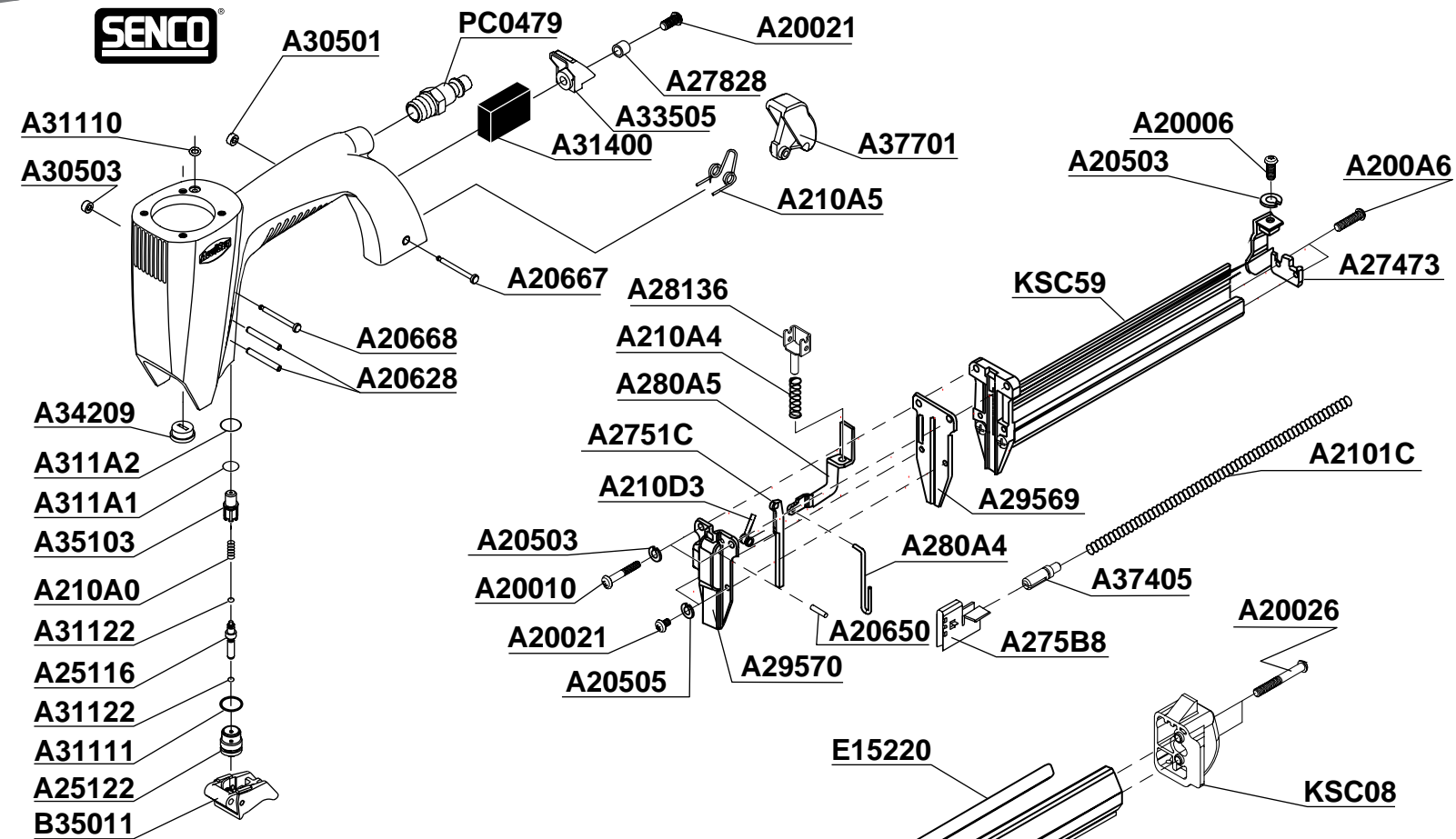


- A33101
- A20349
- A23319
- A34334
- A210A2
- B23115
- A31106
- A3110N
- A31153
- A34007
- A31140
- A33402
- A31153
- A23226
- A34123



NFD191 Issued February 1, 2000  
© 2000 Senco Products, Inc.  
8485 Broadwell Rd.  
Cincinnati, Ohio 45244

Printed in Taiwan  
**TOOL #: 91002 Restrictive**



**REPLACEMENT PARTS LIST**

**LISTA DE PARTES DE REPUESTO • LISTE DE PIÉCES DE RECHANGE**

PART NO.	DESCRIPTION	DESCRIPCIÓN	DÉSIGNATION
A20006	SCREW	TORNILLO	VIS
A20010	SCREW	TORNILLO	VIS
A20021	SCREW	TORNILLO	VIS
A200A6	SCREW	TORNILLO	VIS
A20026	SCREW	TORNILLO	VIS
A20349	SCREW	TORNILLO	VIS
A20503	WASHER	ARANDELA	RONDELLE
A20505	WASHER	ARANDELA	RONDELLE
A20628	PIN	PASADOR	GOUPILLE
A20650	PIN	PASADOR	GOUPILLE
A20667	PIN	PASADOR	GOUPILLE
A20668	PIN	PASADOR	GOUPILLE
A2101C	SPRING	RESORTE	RESSORT
A210A0	SPRING	RESORTE	RESSORT
A210A2	SPRING	RESORTE	RESSORT
A210A4	SPRING	RESORTE	RESSORT
A210A5	SPRING	RESORTE	RESSORT
A210D3	SPRING	RESORTE	RESSORT
A23226	CYLINDER	CILINDRO	CYLINDRE
A23319	DEFLECTOR	DESVIADOR	DÉFLECTEUR
A25116	CORE	VÁSTAGO	NOYAU
A25122	HOUSING	ALOJAMIENTO	CORPS
A27473	BRACKET	BRAZO	CAVALIER
A2751C	PLATE	PLACA	PLAQUE
A275B8	FEEDER SHOE	ALIMENTADOR	POUSSOIR
A27828	SPACER	SEPARADOR	ENTRETOISE
A280A4	BRACKET	BRAZO	CAVALIER
A280A5	LATCH	UÑETA	DOIGT DE RETENUE
A28136	GUIDE	GUIA	GUIDE
A29569	SPACER	SEPARADOR	ENTRETOISE
A29570	COVER	CUBIERTA	COUVERCLE

PART NO.	DESCRIPTION	DESCRIPCIÓN	DÉSIGNATION
A30501	RETAINER	RETÉN	RETENUE
A30503	RETAINER	RETÉN	RETENUE
A31106	SEAL	SELLO	JOINT
A3110N	SEAL	SELLO	JOINT
A31110	SEAL	SELLO	JOINT
A31111	SEAL	SELLO	JOINT
A31122	SEAL	SELLO	JOINT
A31140	SEAL	SELLO	JOINT
A31153	SEAL	SELLO	JOINT
A311A1	SEAL	SELLO	JOINT
A311A2	SEAL	SELLO	JOINT
A31400	MUFFLER	SILENCIADOR	SILENCIEUX
A33101	COVER	CUBIERTA	COUVERCLE
A33402	RETAINER	RETÉN	RETENUE
A33505	COVER	CUBIERTA	COUVERCLE
A34007	VALVE	VÁLVULA	VALVE
A34123	STOP	TOPE	ARRÊT
A34209	BUSHING	CASQUILLO	DOUILLE
A34334	SEAL	SELLO	JOINT
A35103	HOUSING	ALOJAMIENTO	CORPS
A37405	RETAINER	RETÉN	RETENUE
A37701	LATCH	UÑETA	DOIGT DE RETENUE
B23115	CAP	TAPA	BOUCHON
B260C1C	PISTON ASSEMBLY	ASAMBLE DE PISTON	ENSEMBLE PISTON-COUTEAU
B35011	TRIGGER ASSEMBLY	ASAMBLE DE GATILLO	GACHETTE D'ASSAMBLÉE
E15220	LABEL	ETIQUETA	ETIQUETTE
	(SAFETY PRECAUTIONS)	(NORMAS DE SEGURIDAD)	(PRÉCAUTIONS DE SÉCURITÉ)
KSC08	PLATE	PLACA	PLAQUE
KSC56	MAGAZINE ASSEMBLY	ASAMBLE DE CARGADOR	MAGASIN D'ASSAMBLÉE
KSC59	MAGAZINE ASSEMBLY	ASAMBLE DE CARGADOR	MAGASIN D'ASSAMBLÉE
PC0479	PLUG	RETÉN	EMBOUT