



# 08G\_TWFWS Series

## SCREW SPECIFICATIONS

Screw Gauge	#8
Length	1 5/8" - 3"
Recess	#2 Square
Head	Wafer with Nibs
Point	Wing Drill
Thread Type	Fine
Finish	Clear Zinc / Exterior



#2 Square



Wafer with nibs



Winged Drill

## Wing Drill Point Screw

Sheathing to metal fastener

## APPLICATIONS

- Designed for attaching sheathing to steel ranging from 20ga to 12ga thick



## FEATURES AND BENEFITS

- Square recess provides excellent torque transmission for high torque applications
- Wafer head with nibs provides improved drivability into dense materials, ensuring proper countersink
- Fine threads provide improved holding power and thread-forming capability when driving into heavy steel studs
- The wings provide a tight connection while eliminating the need to pre-drill by reaming a hole larger than the threads and breaking off on the steel. This prevents the top layer from riding up the threads during the drilling process leaving a gap between the two layers (commonly referred to as jacking).
- Clear zinc finish
- Exterior finish exceeds 1000 hours salt spray per ASTM B117

## INSTALLATION GUIDELINES

- Use a screwdriver with depth-sensitive clutch and speeds of 0-2500 RPM
- Overdriving may cause a weak connection or thread strip-out of the steel
- The drive is finished when the screw is flush to just below the work surface
- Three full threads must extend past the base metal for an acceptable connection
- Wings may not break off in certain steel 20ga or thinner

# 08G\_TWFWS Series

## Wing Drill Point Screw

Sheathing to metal fastener



### ORDERING INFORMATION

Item Code	Gauge	Length	Thread	Finish	Quantity	Drive Type	Point	Head
08G162CTWFWS	#8	1 5/8"	Fine	Clear Zinc	1000 Tub	#2 Square	Wing Drill	Wafer w/ Nibs
08G200CTWFWS	#8	2"	Fine	Clear Zinc	1000 Tub	#2 Square	Wing Drill	Wafer w/ Nibs
08G200WTWFWS	#8	2"	Fine	Exterior	1000 Tub	#2 Square	Wing Drill	Wafer w/ Nibs

### TECHNICAL INFORMATION

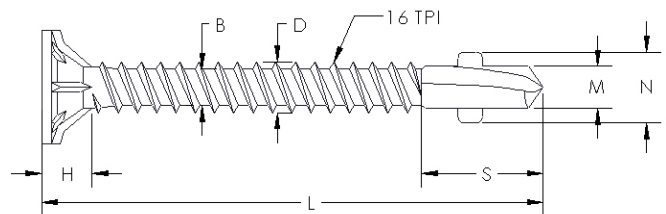
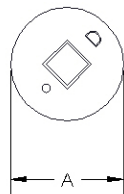
Ultimate Tensile (lbs)*	Torsional Strength (lbs-in)*
2630	62

\*Figures represent ultimate average test results. An appropriate safety factor must be applied for design purposes

Finish	Testing Standard	Corrosion Resistance
Clear Zinc	ASTM B117 Salt Spray Test	Over 24 Hours without red rust
Exterior	ASTM B117 Salt Spray Test	Over 1000 Hours without red rust

#### Reference Dimensions

Length (L):	1.62, 2.00 in
Head Diameter (A):	0.36 in
Head Height (H):	0.17 in
Major Diameter (D):	0.17 in
Minor Diameter (B):	0.13 in
Length of Drill (S):	0.33 in
Diameter of Drill (M):	0.14 in
Width of Wing (N):	0.24in
Threads Per Inch (TPI):	16 threads/in



# 08G\_TWFWS Series

## Wing Drill Point Screw

Sheathing to metal fastener



### ORDERING INFORMATION

Item Code	Gauge	Length	Thread	Finish	Quantity	Drive Type	Point	Head
08G250CTWFWS	#8	2 1/2"	2/3 Fine	Clear Zinc	800 Tub	#2 Square	Wing Drill	Wafer w/ Nibs
08G300CTWFWS	#8	3"	2/3 Fine	Clear Zinc	800 Tub	#2 Square	Wing Drill	Wafer w/ Nibs

### TECHNICAL INFORMATION

Ultimate Tensile (lbs)*	Torsional Strength (lbs-in)*
2630	62

\*Figures represent ultimate average test results. An appropriate safety factor must be applied for design purposes

Finish	Testing Standard	Corrosion Resistance
Clear Zinc	ASTM B117 Salt Spray Test	Over 24 Hours without red rust

#### Reference Dimensions

Length (L):	2.50, 3.00 in
Length of Thread (L1):	1.33, 1.67 in
Head Diameter (A):	0.36 in
Head Height (H):	0.18 in
Major Diameter (D):	0.17 in
Minor Diameter (B):	0.13 in
Length of Drill (S):	0.33 in
Diameter of Drill (M):	0.14 in
Width of Wing (N):	0.24 in
Threads Per Inch (TPI):	16 threads/in

