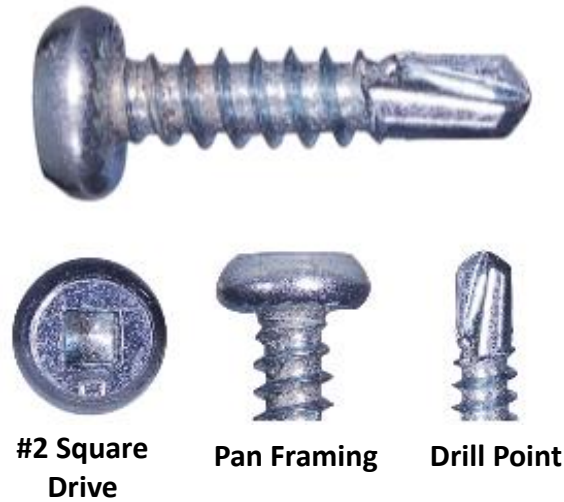




10M_C_MFDS Series

SCREW SPECIFICATIONS

Screw Gauge	#10
Length	3/4", 1"
Recess	#2 Square
Head	Pan Framing
Point	Drill
Thread Type	Fine
Finish	Clear Zinc

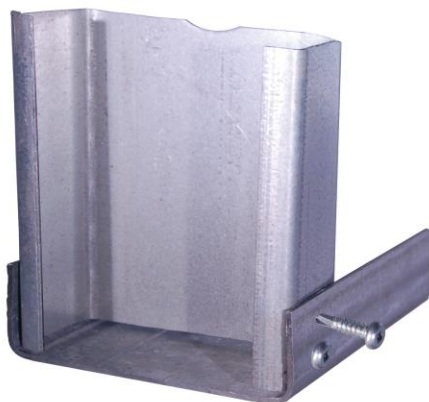


Pan Framing Drill Point Screw

Metal to metal fastener

APPLICATIONS

- Heavy steel framing (35 – 110 mil)
- Steel sheathing
- Structural steel decking
- Steel Trusses



FEATURES AND BENEFITS

- Square recess provides excellent torque transmission for high torque applications
- Pan Framing head with serrations increases connection strength and is ideal for heavy steel to steel applications
- Fine threads provide improved holding power and thread-forming capability when driving into heavy steel
- Forged and hardened drill point
- Clear zinc finish
- ICC approval information available in ESR-3558

INSTALLATION GUIDELINES

- Use a screwdriver with a torque controlled or precise depth-sensitive clutch and speeds of up to 2500 RPM
- Overdriving may cause a weak connection or thread strip-out of the steel
- Three full threads must extend past the base metal for an acceptable connection



10M_C_MFDS

Pan Framing Drill Point Screw

Metal to metal fastener



ORDERING INFORMATION

Item Code	Gauge	Length	Thread	Finish	Quantity	Drive Type	Point	Head
10M075CTMFDS	#10	3/4"	Fine	Clear Zinc	1000 Tub	#2 Square	Drill	Pan Framing
10M100CKMFDS	#10	1"	Fine	Clear Zinc	1000 Box	#2 Square	Drill	Pan Framing

TECHNICAL INFORMATION

Ultimate Shear (lbs)*	Ultimate Tensile (lbs)*	Torsional Strength (lbs-in)*
1779	3175	62

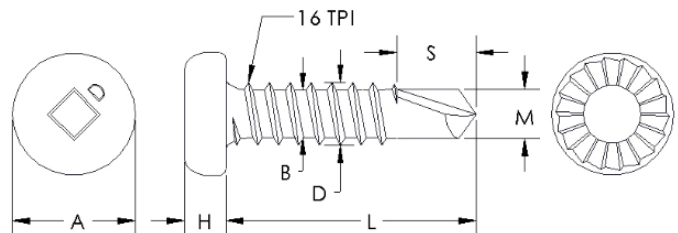
Base Metal Thickness (in)*	Lap Joint Shear (lbs)*	Pull Out (lbs)*	Pull Over (lbs)*
0.04	697	296	1522
0.05	837	378	1506
0.06	1536	574	2365
0.07	1661	801	2710
0.10	1551	1113	2643

*Figures represent ultimate average test results. An appropriate safety factor must be applied for design purposes

Finish	Testing Standard	Corrosion Resistance
Clear Zinc	ASTM B117 Salt Spray Test	Over 24 Hours without red rust

Reference Dimensions

Length (L):	0.75, 1.00 in
Head Diameter (A):	0.35 in
Head Height (H):	0.11 in
Major Diameter (D):	0.19 in
Minor Diameter (B):	0.14 in
Length of Drill (S):	0.27 in
Diameter of Drill (M):	0.16 in
Threads Per Inch (TPI):	16 threads/in



Fasteners comply with ASTM C1513, as referenced in ICC report ESR-3558. They are in compliance with the 2012 and 2015 International Building code and 2012 and 2015 International Residential code.

