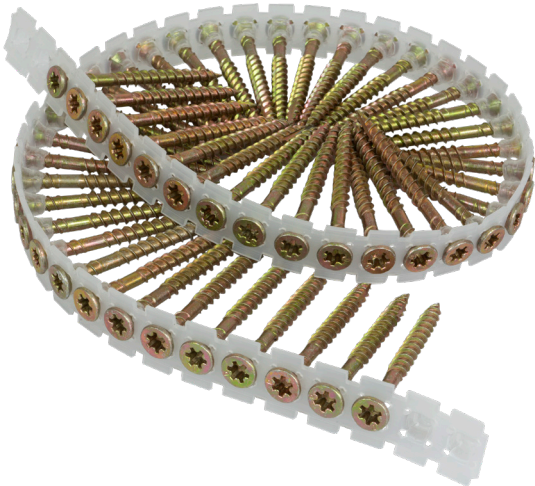




WOOD TO WOOD
INTERIOR SUBFLOOR SCREWS



DRIVE TYPE 

HEAD 

POINT 

APPLICATIONS

Interior wood to wood,
underlayment/subflooring,
framing

INTERIOR SUBFLOOR SCREWS

SENCO's line of subfloor screws are designed for better holding power and overall drivability. The Type 17 point expedites thread engagement, while the double threads decrease the drive time and increase holding power. SENCO's proprietary Rex drive provides smooth and reliable engagement with the bit. This allows the transfer of more torque and minimizes cam outs, prolonging bit life.

OVERVIEW

- Double thread design
- Rex drive
- Flat head
- Type 17 point
- Yellow zinc finish

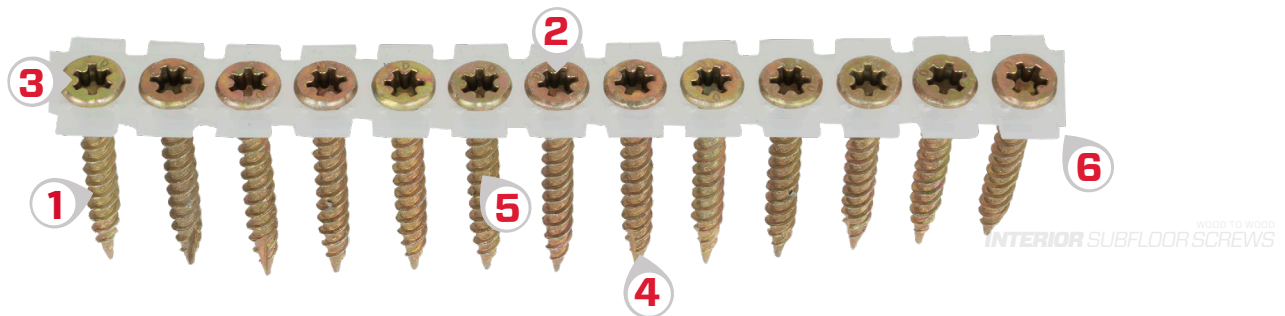
INSTALLATION GUIDELINES

- Use a screwdriver with a torque controlled or precise depth-sensitive clutch
- Overdriving may cause a weak connection or thread strip-out
- Drive is finished when the screw is just below the work surface
- Recommend driving 1 inch of the overall screw length into the substraat

Item #	Screw Gauge	Length	Drive Type	Head	Point	Thread Type	Finish	Quantity
08F150YTK	#8	1.5"	REX Drive	Flat	Type 17	Double	Yellow Zinc	1000/Box (Collated)
08F175YTK	#8	1.75"	REX Drive	Flat	Type 17	2/3 Double	Yellow Zinc	1000/Box (Collated)
08F200YTK	#8	2.00"	REX Drive	Flat	Type 17	2/3 Double	Yellow Zinc	1000/Box (Collated)



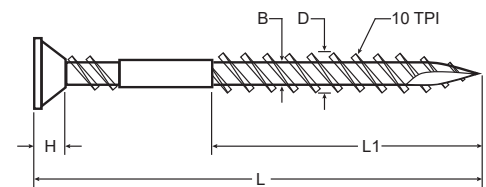
INTERIOR SUBFLOOR SCREWS



- 1 DOUBLE THREAD DESIGN**
Reduces installation time while improving holding power
- 2 REX DRIVE**
Recess provides smooth engagement with high torque transmitting capability reducing operator fatigue, and extending bit life
- 3 FLAT HEAD**
Provides strong holding power for wood applications
- 4 TYPE 17 POINT**
Quickly penetrates wood reducing drive time
- 5 YELLOW ZINC FINISH**
Supports corrosion resistance improving overall life of the fastener
- 6 50 SCREWS PER STRIP**
High capacity strip allowing for less downtime

REFERENCE DIMENSIONS

Item #	Length (L)	Thread Length (L1)	Head Diam. (A)	Head Hgt. (H)	Major Diam. (D)	Minor Diam. (B)	Threads per Inch (TPI)
08F150YTK	1.50"	1.32"	0.32"	0.18"	0.17"	0.12"	10
08F175YTK	1.75"	1.17"	0.32"	0.18"	0.17"	0.12"	10
08F200YTK	2.00"	1.33"	0.32"	0.18"	0.17"	0.12"	10



TECHNICAL INFORMATION

Item #	Finish	Ultimate Tensile (lbs)*	Torsional Strength (lbs/in)*	Corrosion Resistance ASTM B117	Withdrawal Force (lbs) ASTM D1761
08F150YTK	Yellow Zinc	2010	88	Over 48 hrs w/o red rust	571.78
08F175YTK	Yellow Zinc	2010	88	Over 48 hrs w/o red rust	623.31
08F200YTK	Yellow Zinc	2010	88	Over 48 hrs w/o red rust	944.93

*Figures represent ultimate average test results. An appropriate safety factor must be applied for design purposes.

Always read the Operators Manual and Safety Instructions with all tools to ensure proper use and safety precautions. For additional information on SENCO fastening systems and how SENCO will save you time, reduce costs and increase quality, call our toll-free Action Line: 800-543-4596, or visit our website at: www.Senco.com.