



10M075YTFFDX

SCREW SPECIFICATIONS

Screw Gauge	#10
Length	3/4"
Recess	Rex Drive
Head	Pan Framing
Point	Drill
Thread Type	Fine
Finish	Yellow Zinc



Rex Drive



Pan Framing

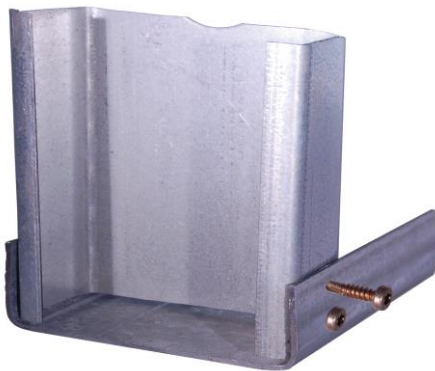


Drill Point

Pan Framing Head Drill Point Screw Metal to metal fastener

APPLICATIONS

- Heavy steel framing (35 – 110 mill)
- Steel sheathing
- Structural steel decking
- Steel Trusses



FEATURES AND BENEFITS

- Our Rex drive recess provides smooth engagement with high torque transmitting capability reducing operator fatigue, and extending bit life
- Pan Framing head with serrations is ideal for steel construction and ensures a tight connection over time.
- Fine threads provide improved holding power and thread-forming capability when driving into heavy steel
- Forged and hardened drill point
- Yellow zinc finish
- ICC approval information available in ESR-3558

INSTALLATION GUIDELINES

- Use a screwdriver with a torque controlled or precise depth-sensitive clutch and speeds of up to 2500 RPM
- Overdriving may cause a weak connection or fastener failure
- Three full threads must extend past the base metal for an acceptable connection



10M075YTFFDX



Pan Framing Head Drill Point Screw

Metal to Metal fastener

ORDERING INFORMATION

Item Code	Gauge	Length	Thread	Finish	Quantity	Drive Type	Point	Head
10M075YTFFDX	#10	3/4"	Fine	Yellow Zinc	1000 Tub	Rex	Drill	Pan Framing

TECHNICAL INFORMATION

Ultimate Shear (lbs)*	Ultimate Tensile (lbs)*	Torsional Strength (lbs-in)*
1779	3175	65

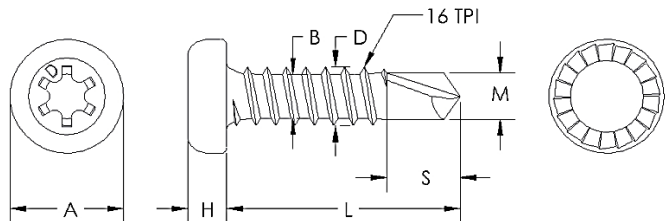
Base Metal Thickness (in)*	Lap Joint Shear (lbs)*	Pull Out (lbs)*	Pull Over (lbs)*
0.04	696	296	1522
0.05	837	378	1506
0.06	1536	574	2365
0.07	1551	801	2643
0.10	1551	1113	2643

*Figures represent ultimate average test results. An appropriate safety factor must be applied for design purposes

Finish	Testing Standard	Corrosion Resistance
Yellow Zinc	ASTM B117 Salt Spray Test	Over 48 Hours without red rust

Reference Dimensions

Length (L):	0.75 in
Head Diameter (A):	0.35 in
Head Height (H):	0.13 in
Major Diameter (D):	0.19 in
Minor Diameter (B):	0.14 in
Length of Drill (S):	0.27 in
Diameter of Drill (M):	0.16 in
Threads Per Inch (TPI):	16 threads/in



Fasteners comply with ASTM C1513, as referenced in ICC report ESR-3558. They are in compliance with the 2012 and 2015 International Building code and 2012 and 2015 International Residential code.

