



10M075Y_FT4X

SCREW SPECIFICATIONS

Screw Gauge	#10
Length	3/4"
Recess	Rex Drive
Head	Pan Framing
Point	T4 Drill
Thread Type	22 TPI
Finish	Yellow Zinc



Rex Drive



Pan Framing



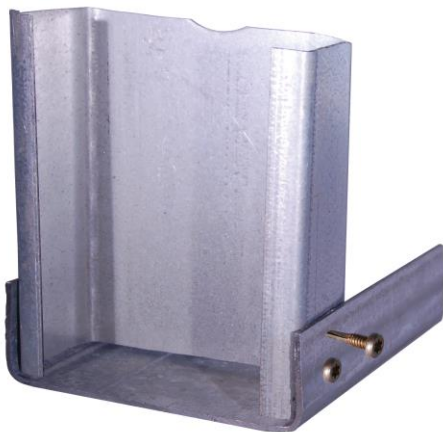
T4 Drill Point

Pan framing Head T4 Drill Point Screw

Metal to metal fastener

APPLICATIONS

- Heavy steel framing (175 – 312 mil)
- Steel sheathing
- Structural steel decking
- Steel Trusses



FEATURES AND BENEFITS

- Our Rex drive recess provides smooth engagement with high torque transmitting capability reducing operator fatigue, and extending bit life
- Pan framing head with serrations is ideal for steel construction and ensures a tight connection over time
- 22 Threads per inch provides improved thread engagement in a wide variety of steel thicknesses
- Forged and hardened T4 drill point is designed to cut through up to 12ga steel
- Yellow zinc finish
- ICC approval information available in ESR-3558

INSTALLATION GUIDELINES

- Use a screwdriver with a torque controlled or precise depth-sensitive clutch and speeds of up to 2500 RPM
- Overdriving may cause a weak connection or fastener failure
- Three full threads must extend past the base metal for an acceptable connection



10M075Y_FT4X

Pan framing head T4 Drill Point Screw

Metal to metal fastener



ORDERING INFORMATION

Item Code	Gauge	Length	Thread	Finish	Quantity	Drive Type	Point	Head
10M075YLFT4X	#10	3/4"	22 TPI	Yellow Zinc	8000 Loose	Rex Drive	T4 Drill	Pan Framing
10M075YKFT4X	#10	3/4"	22 TPI	Yellow Zinc	1000 Box	Rex Drive	T4 Drill	Pan Framing

TECHNICAL INFORMATION

Ultimate Shear (lbs)*	Ultimate Tensile (lbs)*	Torsional Strength (lbs-in)*
1795	2318	67

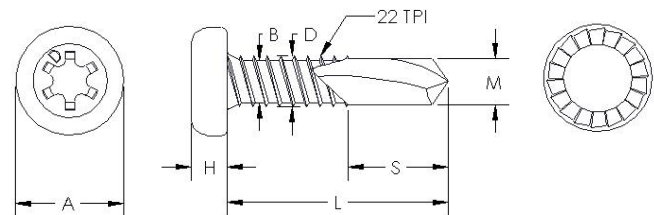
Base Metal Thickness (in)*	Lap Joint Shear (lbs)*	Pull Out (lbs)*	Pull Over (lbs)*
0.04	720	283	1440
0.05	788	300	1602
0.06	1409	602	2355
0.07	1809	749	2500
0.10	1650	1116	2286

*Figures represent ultimate average test results. An appropriate safety factor must be applied for design purposes

Finish	Testing Standard	Corrosion Resistance
Yellow Zinc	ASTM B117 Salt Spray Test	Over 48 Hours without red rust

Reference Dimensions

Length (L):	0.75 in
Head Diameter (A):	0.35 in
Head Height (H):	0.13 in
Major Diameter (D):	0.19 in
Minor Diameter (B):	0.13 in
Length of Drill (S):	0.34 in
Diameter of Drill (M):	0.15 in
Threads Per Inch (TPI):	22 threads/in



Fasteners comply with ASTM C1513, as referenced in ICC report ESR-3558. They are in compliance with the 2012 and 2015 International Building code and 2012 and 2015 International Residential code.

